

**NETWORK ANALYSIS**

<b>JOHN NIMMONS &amp; ASSOCIATES</b> ENERGY LAW CONSULTANTS SAUSALITO CA	<b>LEGAL/REGULATORY ANALYSIS FOR GAS RESEARCH INSTITUTE</b>
<b>DENNIS STARKOVICH</b>	POST OFFICE BOX 90588 PALO ALTO, CALIFORNIA (415) 321-4800

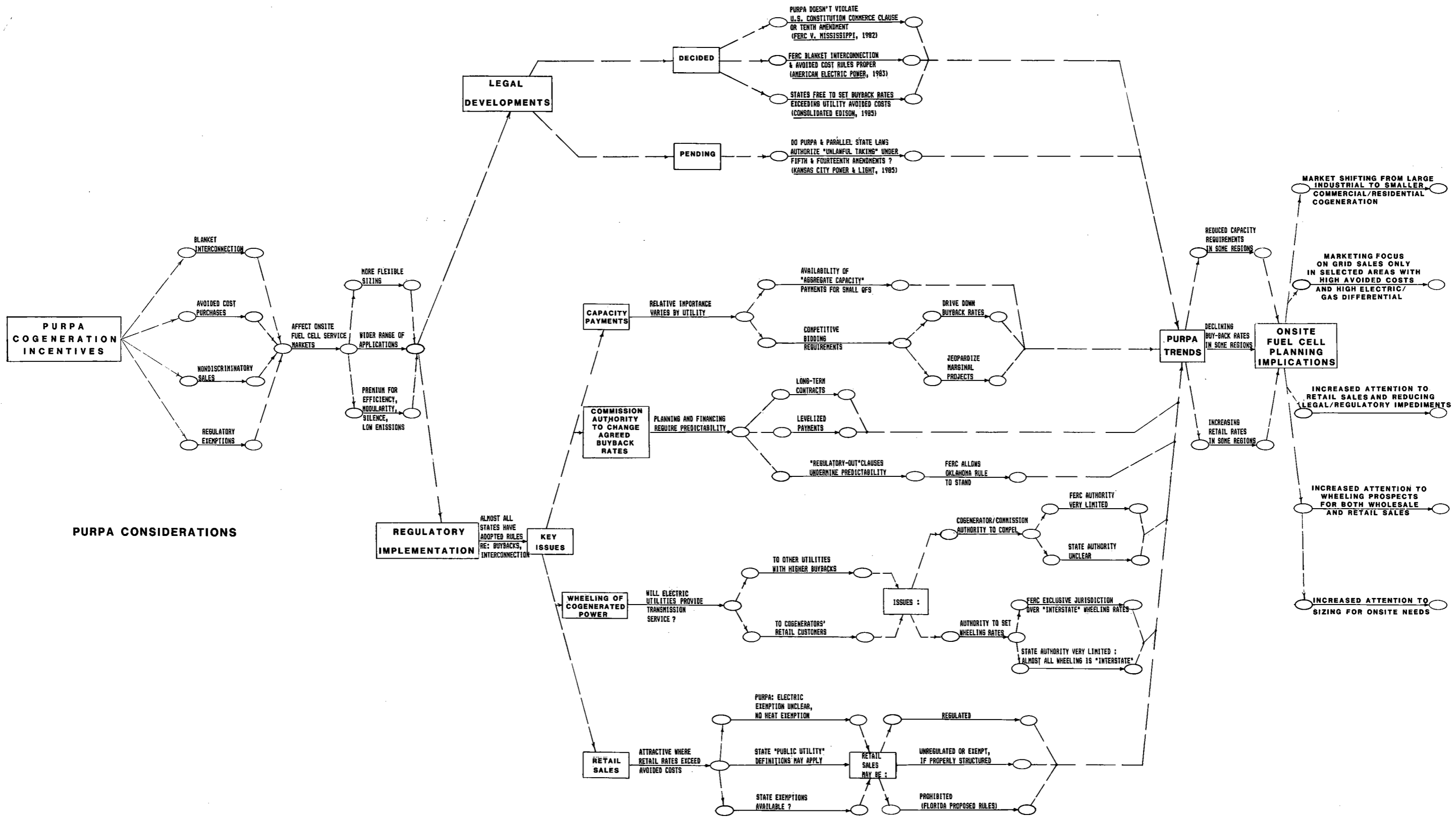
**LEGEND**

READ NETWORK FROM LEFT TO RIGHT

MAIN HEADING DESCRIPTION

LOGIC

**FUEL CELL PROMOTION**



**NETWORK ANALYSIS**

**JOHN NIMMONS & ASSOCIATES**  
 ENERGY LAW CONSULTANTS  
 SAUSALITO CA

**DENNIS STARKOVICH**  
 POST OFFICE BOX 50383  
 PALO ALTO, CALIFORNIA 94301-0383

**LEGAL/REGULATORY ANALYSIS FOR GAS RESEARCH INSTITUTE**

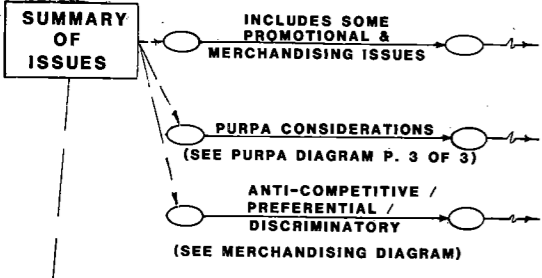
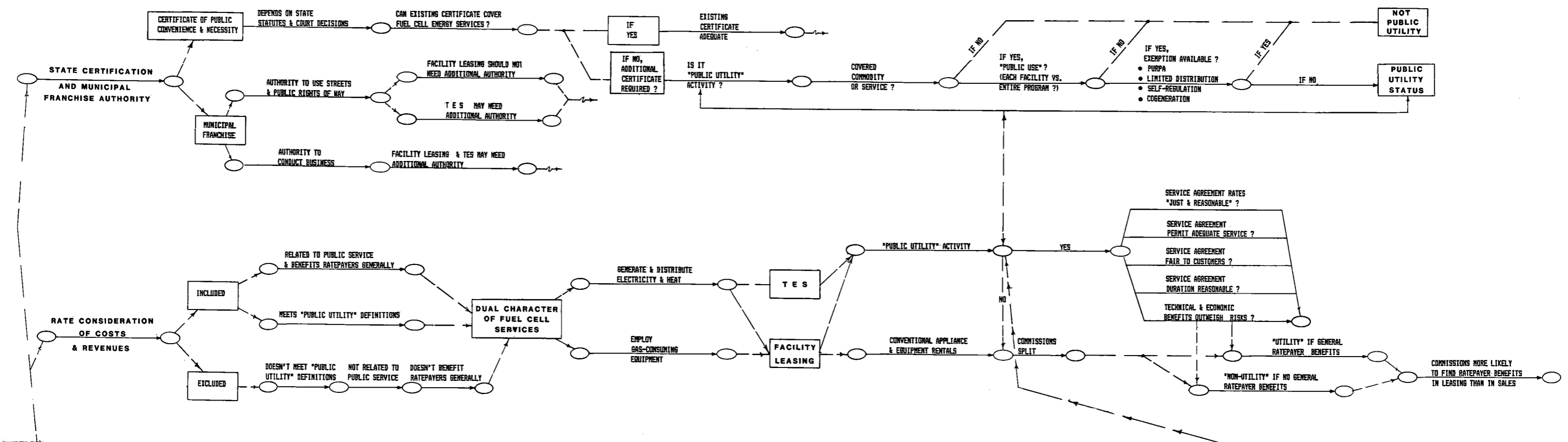
**LEGEND**

READ NETWORK FROM LEFT TO RIGHT

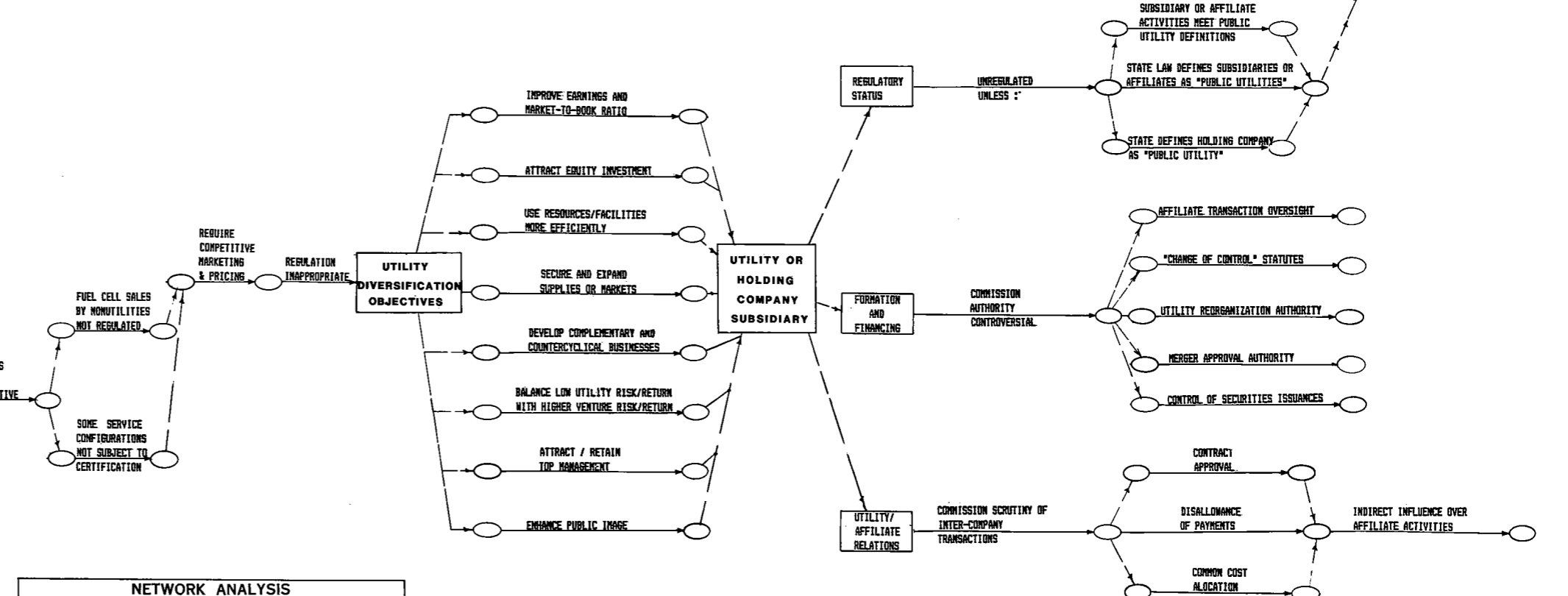
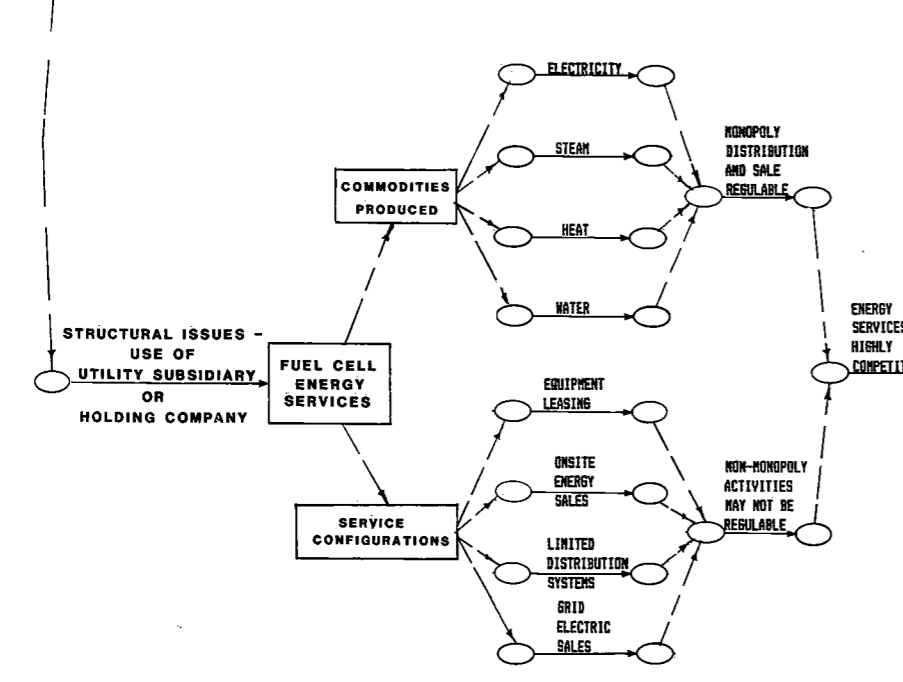
MAIN HEADING    DESCRIPTION ○

LOGIC →

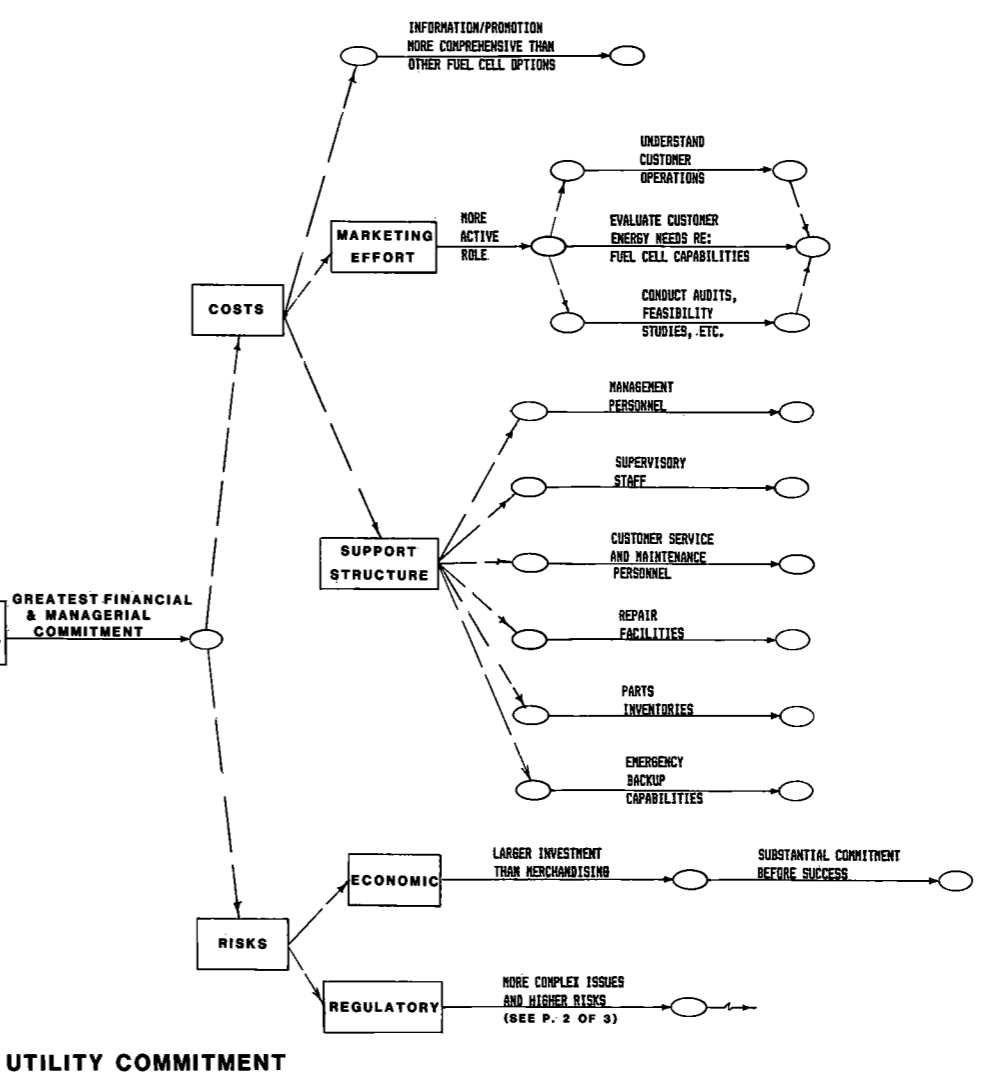
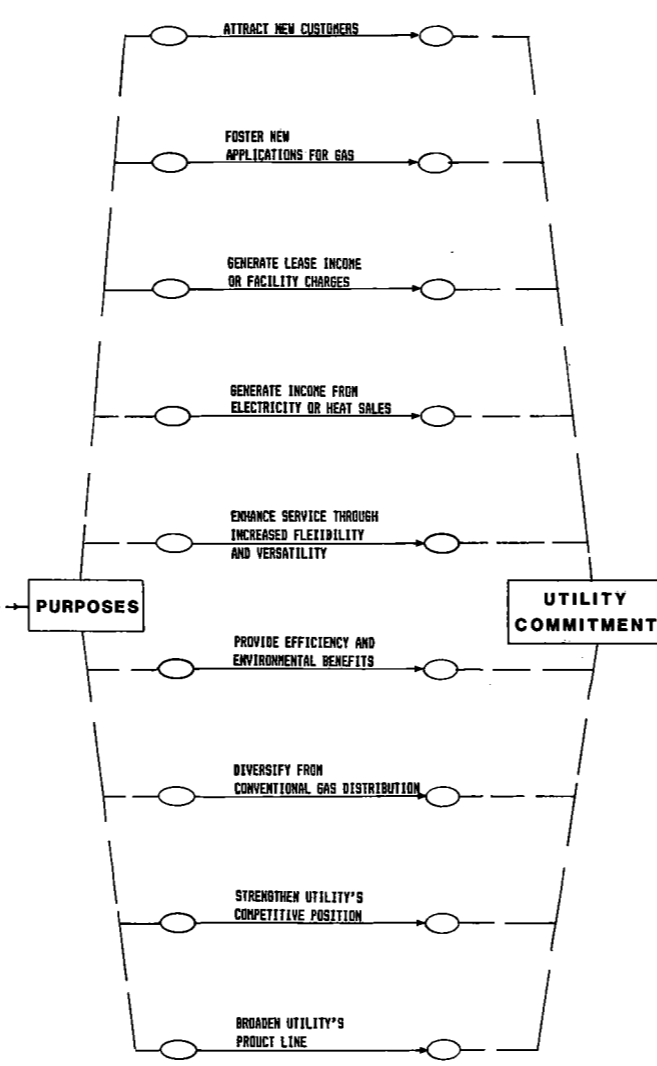
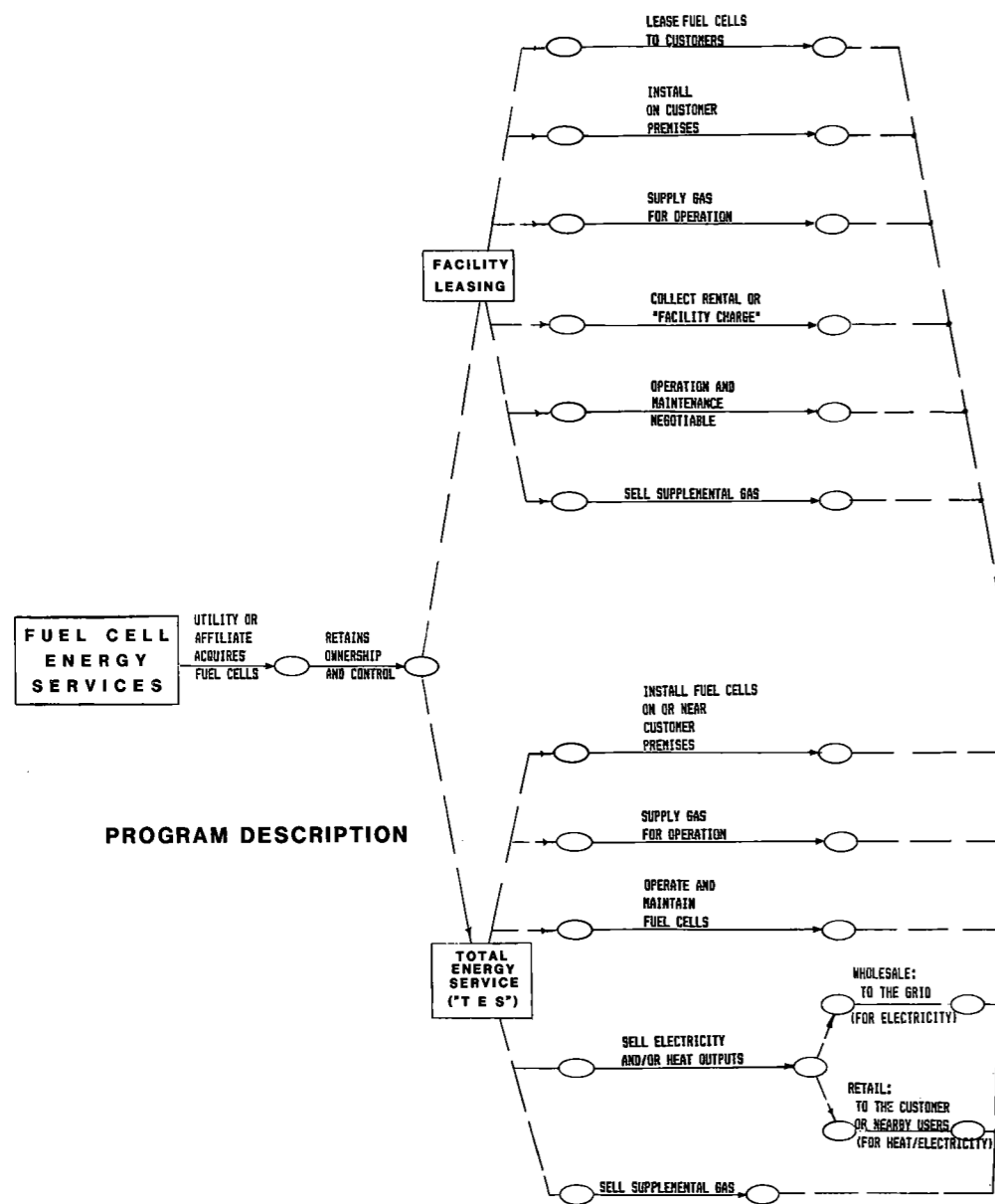
**FUEL CELL ENERGY SERVICES: PURPA**



**LEGAL / REGULATORY ISSUES**



NETWORK ANALYSIS	
JOHN NIMMONS & ASSOCIATES ENERGY LAW CONSULTANTS SAUSALITO CA	LEGAL/REGULATORY ANALYSIS FOR GAS RESEARCH INSTITUTE
DENNIS STARKOVICH	POST OFFICE BOX 90488 PALO ALTO, CALIFORNIA (415) 321-4800



**NETWORK ANALYSIS**

<b>JOHN NIMMONS &amp; ASSOCIATES</b> ENERGY LAW CONSULTANTS SAUSALITO CA	<b>LEGAL/REGULATORY ANALYSIS FOR GAS RESEARCH INSTITUTE</b>
DENNIS STARKOVICH	POST OFFICE BOX 80383 PALO ALTO, CALIFORNIA (415) 321-6800

**LEGEND**

READ NETWORK FROM LEFT TO RIGHT

MAIN HEADING    DESCRIPTION ○

LOGIC →

**FUEL CELL ENERGY SERVICES**